



THE FRANKFORD RADIO CLUB NEWSLETTER

PROFICIENCY THROUGH COMPETITION

CALENDAR

September 2008:

- 6-7 All Asian DX Contest, SSB
- 7 North American Sprint, CW
- 9 FRC Main Meeting, Phila.**
- 9 Rexy Meeting B**
- 13-14 Worked All Europe, SSB
- 14 North American Sprint, SSB
- 18 T.I.T.S. Meeting, Noon**
- 20-21 Scandinavian Contest, CW
- 23 Rexy Meeting B**
- 27-28 CQ WW RTTY Contest
- 27-28 Scandinavian Contest, SSB

October 2008:

- 4-5 Oceania DX Contest, SSB
- 4-5 California QSO Party
- 14 FRC Main Meeting, Phila.**
- 14 Rexy Meeting B**
- 11-12 Oceania DX Contest, CW
- 11-12 Pennsylvania QSO Party
- 16 T.I.T.S. Meeting, Noon**
- 18-19 Worked All Germany Contest
- 25-26 CQ WW DX Contest, SSB**
- 28 Rexy Meeting B**

November 2008:

- 1-3 ARRL Sweepstakes, CW
- 8-9 Worked All Europe, RTTY
- 8-9 OK/OM DX Contest
- 11 FRC Main Meeting, Phila.**
- 11 Rexy Meeting B**
- 15-17 ARRL Sweepstakes, CW
- 20 T.I.T.S. Meeting, Noon**
- 22-22 LZ DX Contest
- 25 Rexy Meeting B**
- 29-30 CQ WW DX Contest, CW**

CHANGES

None this month

Deadline for October issue:
Sunday, September 28, 2008

President's Column

I want to congratulate the membership for the outstanding job done during the last contest season!

In case you haven't yet heard, **FRC** has won the unlimited club competitions in ***BOTH*** the CQWW and ARRL DX Contests. That is a tremendous accomplishment - one we can be proud of, but one that could not have happened without the cooperation and dedication of many club members. My thanks go out to those of you who participated in these contests. Thanks to those of you who contribute wholeheartedly every year. Thanks to those of you who participated for the first time. Thanks to those of you who have been inactive, but who rejoined our active ranks. And...thanks to those of you who have participated in the past in a part time way but who mounted serious efforts this time around. Our margins of victory were small, and we could not have succeeded without each and every one of you.

I am guessing that YCCC will be better organized during the upcoming contest season, so we cannot afford to relax. We need to redouble our efforts, to do what we did last year and then some! Start planning right now. Get your stations in working order. Ask for assistance if you need some. If you need a home to operate, find one. If you have a station that needs operators, let us know. If we don't continue to work hard, we will lose our advantage over our neighbors to the north.

The first club meeting of the fall season is scheduled for Tuesday, September 9th. It will take place at the King of Prussia Fire House and will start at 8 pm. Remember that some food is available at the firehouse as well as ample liquid refreshment. Plan to arrive early I look forward to seeing lots of you at the September meeting.

73, John W8FJ

FRC Mailing List (Reflector) Moves

The old **FRC** mailing list has been taken down and moved to another server. If you were on the old mailing list and haven't signed up for the new one, you won't get any more emails from either **FRC** list. We are urging all **FRC** members to move to the new list! If you need information on how to sign up for the new list, please email Bob at k2ut@k2ut.org

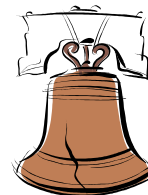


MEETINGS

Main Meeting

The main monthly meeting of the **Frankford Radio Club** will be held in King of Prussia on Tuesday, September 9 at 8 PM.

The firehouse address is 170 Allendale Road, King of Prussia, PA 19406. Phone number is 610-265-5635.



T.I.T.S. meeting—The Trexlertown International Transmitting Society meets on Thursday, September 18 at 12:00 noon. Location is the Hometown Diner on Route 222 in Trexlertown..

Rexy Meeting B—The Rexy's **FRC Meeting B** meets about 8 PM on the second and fourth Tuesdays of each month.

2008 FRC Fund Drive



If for some reason you don't get an envelope, or you misplace it, you can send your contribution to:

Robert L. Shohet, KQ2M
51 Scudder Road
Newtown, CT 06470

List of 2008 FRC Contributors as of August 24, 2008

AA2WN	K3CC	K9RS	N3AD	W0MHK	W2YR	W3SQ
AA3B	K3CP/5	KC2NB	N3BNA	W2CG	W3BGN	W8FJ
AB2IO	K3FMQ	KD3TB	N3ED	W2GD	W3CC	WA2VYA
K2DM	K3GYS	KQ2M	N3GNW	W2IRT	W3CF	WA3YOB
K2FL	K3II	KQ3F	N3KR	W2LE	W3EA	WE3C
K2GN	K3JGJ	KV2M	N3RD	W2MC	W3FV	WQ3E
K2PS	K3ND	N2BA	N3RW	W2OF	W3FVT	WT3Q
K2QPN	K3NL	N2CQ	N3YW	W2RD	W3GK	K300/K3000
K2SB	K3PH	N2LT	N3ZA	W2REH	W3GNQ	W3MM/W3RAT
K2SG	K3TEJ	N2RM	N8NA	W2TV	W3KV	
K2TW	K3WW	N2SS	N9GG	W2UDT	W3MF	
K2UT	K3YD	N2TK	NO2R	W2UP	W3PA	
K3ATO	K3ZV	N2VW	NY3L	W2YC	W3SOH	

FRC 2007-2008 CONTEST SEASON SCORES

Rank	Call	CQ SSB	CQ CW	ARRL SSB	ARRL CW	Total
1	W2GD	9,384,575	11,793,118	840,000	1,058,427	23,076,120
2	N2NT	1,269,796	10,560,680		3,480,321	15,310,797
3	K3WW	4,077,304	4,845,048	1,329,378	3,692,100	13,943,830
4	AA3B	2,223,914	7,545,824	1,006,560	2,829,330	13,605,628
5	AA1K	3,246,250	4,218,890	1,566,870	3,091,671	12,123,681
6	K2NG	3,955,190	4,195,668	3,220,656		11,371,514
7	K3OO	4,595,572	4,360,158	524,256	1,252,628	10,732,614
8	K2TW	4,198,187	1,526,954	3,220,656	1,058,427	10,004,224
9	W3BGN	3,502,276	3,053,908	1,316,766	2,116,854	9,989,804
10	W2OX	3,728,959	195,300	2,668,266	2,198,250	8,790,775
11	N2LT	2,705,900	3,660,816	23,400	2,340,576	8,730,692
12	K3TEJ	488,748	5,462,724	186,616	2,585,000	8,723,088
13	N2TK	4,198,187		4,275,510	108,068	8,581,765
14	WE3C	3,110,136	2,563,105	684,030	1,836,824	8,194,095
15	W3FV	4,198,187	2,563,105	342,015	918,412	8,021,719
16	K9RS	2,493,856	1,305,056	1,203,450	2,457,992	7,460,354
17	K3NM	3,728,959		2,668,266		6,397,225
18	W3PP	855,823	2,869,440	673,056	1,514,654	5,912,973
19	KQ3F	2,293,136	1,362,822	342,015	1,795,268	5,793,241
20	K3VA		5,462,724		157,002	5,619,726
21	W1GD	2,267,304	1,348,692	658,350	1,260,270	5,534,616
22	NN3Q	1,555,068	2,563,105	342,015	918,412	5,378,600
23	N3RS		2,626,444	675,844	1,535,946	4,838,234
24	N2MM	1,379,632	1,522,256	13,508	1,832,376	4,747,772
25	N2ED		1,675,276	59,000	2,938,000	4,672,276
26	NE3F	1,377,024	1,460,830	501,954	1,305,278	4,645,086
27	N2RM	3,002,148		261,459	1,246,400	4,510,007
28	N3AD		3,561,408	920,640		4,482,048
29	W2CG	747,648	1,838,858	464,854	1,212,888	4,264,248
30	K2DM	1,965,138	1,795,224	24,960	434,160	4,219,482
31	N2BA	3,119,844	1,024,800			4,144,644
32	K3MD		2,309,720		1,818,450	4,128,170
33	W2UP	1,109,790	1,428,038		1,469,324	4,007,152
34	K3PH	643,821	2,733,548	235,365	342,216	3,954,950
35	K2PS	874,293	1,415,404	397,518	1,184,016	3,871,231
36	KF3B		2,563,105	342,015	918,412	3,823,532
37	N3ZA	1,530,598	973,944	567,630	667,776	3,739,948
38	K3ND	1,161,006	1,374,510	444,276	731,895	3,711,687
39	K3ZV	1,501,074	743,089	185,440	1,246,400	3,676,003
40	N3RD	852,768	1,313,222	675,844	767,973	3,609,807
41	K2AX	1,155,748	1,486,178	370,880	486,340	3,499,146
42	K3WI	855,823	1,434,720	336,528	757,327	3,384,398
43	WB4FDT	855,823	1,434,720	336,528	757,327	3,384,398
44	K3CT		393,354	185,000	2,585,000	3,163,354
45	N3DXX	1,246,928		601,725	1,228,996	3,077,649
46	N3BNA			1,785,000	1,160,325	2,945,325
47	WA2VYA	2,161,298	272,734	207,504	268,515	2,910,051
48	N2VW	2,161,298	201,744	317,652	228,528	2,909,222
49	W2LE	812,904	1,100,223	180,624	700,470	2,794,221
50	W3RJ		65,780	606,945	2,109,456	2,782,181

FRC 2007-2008 CONTEST SEASON SCORES

Rank	Call	CQ SSB	CQ CW	ARRL SSB	ARRL CW	Total
51	NO2R	1,246,928	1,526,954			2,773,882
52	N2SR		1,313,222	675,844	767,973	2,757,039
53	N3ED		1,313,222	675,844	767,973	2,757,039
54	W2IRT	1,439,022		442,828	800,730	2,682,580
55	W2RQ	1,269,796	1,400,645			2,670,441
56	KQ2M	437,958	751,296	64,758	1,237,104	2,491,116
57	N2NC	1,269,796	1,156,164			2,425,960
58	K2TTT	1,139,224	1,001,114	256,251		2,396,589
59	W3CF	688,512	730,415	250,977	652,639	2,322,543
60	K2QM	539,045	1,024,800	207,504	478,290	2,249,639
61	N3NA		1,313,222	144,000	767,973	2,225,195
62	K2WB	2,161,298				2,161,298
63	W2WAS	2,161,298				2,161,298
64	N2WKS	539,045	1,024,800	62,046	478,290	2,104,181
65	W8FJ		1,313,222		767,973	2,081,195
66	K3PP	51,830	51,660	988,416	958,320	2,050,226
67	W2RD	690,668	681,030	516,384	157,170	2,045,252
68	WQ2N	317,680	1,075,074	9,212	565,500	1,967,466
69	W3MF	1,287,642		470,730	163,248	1,921,620
70	W2EN	373,824	919,429		606,444	1,899,697
71	NM3E	1,555,068		342,015		1,897,083
72	KQ3V	1,555,068		342,015		1,897,083
73	ZP5AZL			1,785,000		1,785,000
74	K3QF		1,627,104		50,000	1,677,104
75	N2CQ	547,635	689,970	131,775	287,576	1,656,956
76	W0MHK	547,635	689,970	131,775	287,576	1,656,956
77	W2YC	547,635	689,970	131,775	287,576	1,656,956
78	N3MX	546,480		425,784	668,568	1,640,832
79	W3CC	1,270,060		364,640		1,634,700
80	K3YD	1,232,640			334,284	1,566,924
81	W2OF	577,874	743,089		243,180	1,564,143
82	K3ATO	25,098	730,415	28,710	772,435	1,556,658
83	N3FTI	1,555,068				1,555,068
84	KW3Z		1,434,720			1,434,720
85	N3RJ	520,857	689,816	223,560		1,434,233
86	W3EA	1,120,352		271,296	29,133	1,420,781
87	W2YR	800,074	448,718	154,972		1,403,764
88	N2AA		1,400,645			1,400,645
89	WA3LRO		1,313,222			1,313,222
90	WB3FIZ			342,015	918,412	1,260,427
91	WM2H				1,246,400	1,246,400
92	W3TB	1,232,640				1,232,640
93	N2EA	539,045		207,504	478,290	1,224,839
94	KC2NB	825,120		188,790	176,984	1,190,894
95	N3GNW	642,904	115,978	182,320	207,252	1,148,454
96	AA2WN		689,970	131,775	287,576	1,109,321
97	W2GJ			336,528	757,327	1,093,855
98	N1RK	577,874		185,440	317,604	1,080,918
99	W6XR	437,324			562,716	1,000,040
100	K2CJ	315,060	71,550	143,716	469,650	999,976

FRC 2007-2008 CONTEST SEASON SCORES

Rank	Call	CQ SSB	CQ CW	ARRL SSB	ARRL CW	Total
101	N3RG		743,089		243,180	986,269
102	NT3V	688,512		250,977		939,489
103	W3IZ	640,816	64,492	16,632	143,988	865,928
104	W2NO			232,427	606,444	838,871
105	K2SQS	331,906	235,800	69,888	171,464	809,058
106	N3KR		416,916	109,725	280,098	806,739
107	W3GK	469,340			277,326	746,666
108	AB2IO	539,045		207,504		746,549
109	N3OW	688,512				688,512
110	KD3TB	364,927	74,340	117,872	106,555	663,694
111	K3IPK			246,645	357,555	604,200
112	W2VQ	317,680			282,750	600,430
113	AB2E		200,960	69,192	322,244	592,396
114	W2RDS	577,874				577,874
115	K2QPN	107,380	292,500	21,900	150,240	572,020
116	K3FMQ	364,927	37,170	58,936	106,555	567,588
117	KD3RF	364,927	37,170	58,936	106,555	567,588
118	KV2M	243,176		65,804	243,180	552,160
119	W3FVT	245,700	100,264	102,960	88,911	537,835
120	KC3WX				506,325	506,325
121	N2SS	410,896		90,972		501,868
122	NQ3X	166,452	160,094		127,926	454,472
123	W3PA	378,914		68,250		447,164
124	KD2I	432,072				432,072
125	N3YW	227,306		131,520	66,660	425,486
126	WA3RHW	424,500				424,500
127	W2XT	271,152		153,090		424,242
128	WF3M	331,516			73,484	405,000
129	K2UT	226,000		105,000	72,594	403,594
130	N8NA			92,000	280,000	372,000
131	W2REH		356,324			356,324
132	K2SG		330,364			330,364
133	K3II		146,448		164,820	311,268
134	WT3Q				308,915	308,915
135	KB3TS	134,484			132,600	267,084
136	NA2U			256,251		256,251
137	K3GYS		195,364		49,500	244,864
138	NQ3N	216,036	25,120	1,428		242,584
139	KC2TN			185,440		185,440
140	W2MC			185,440		185,440
141	WA2VUN			184,266		184,266
142	N3EHY	89,658	86,296			175,954
143	AA3DF				158,400	158,400
144	N3RW	70,584		57,057	18,820	146,461
145	WE3E			41,310	80,344	121,654
146	KW3F				103,716	103,716
147	W3SQ			29,000	70,000	99,000
148	W2UDT			66,708	25,254	91,962
149	N2VM	2,232	42,066	6,600	20,790	71,688
150	NY3C			40,716	26,144	66,860

FRC 2007-2008 CONTEST SEASON SCORES

Rank	Call	CQ SSB	CQ CW	ARRL SSB	ARRL CW	Total
151	N3NR	63,342				63,342
152	W3TUA			3,240	50,760	54,000
153	KD2HE		35,784		1,452	37,236
154	W3AP				32,802	32,802
155	N9GG				23,608	23,608
156	N4XU				13,818	13,818
157	K3NL				4,320	4,320



WE WIN!!!!!!



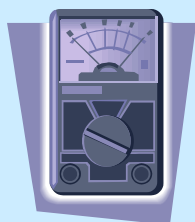
<u>2007 CQWW DX Tests</u>		<u>2008 ARRL DX Tests</u>		
	<u>Score</u>		<u>Score</u>	<u>Entries</u>
FRC:	266,909,574	FRC:	129,067,251	158
YCCC:	260,552,723	YCCC:	121,365,369	181
PVRC:	139,642,195	PVRC:	70,285,920	160

2008 CQ WW DX Rules Changes

(from the August 20, 2008 ARRL Contest Update)

The rules for the 2008 CQ WW DX <<http://www.cqww.com/2008_rules_cqww.pdf>> contest have been released, including several noteworthy updates.

- ◆ The Single-Op rules now address use of CW Skimmer and Skimmer-like technologies.
- ◆ Self-spotting and requesting to be spotted are clearly banned in all categories.
- ◆ Multi-single stations are required to identify each QSO in the log as having been made by the run or multiplier station.
- ◆ Remote operation is briefly addressed.
- ◆ Disqualification (DQ) criteria have been expanded and elaborated.



Watt Meters

Fill ALL your Thruline® wattmeter needs at <<<http://www.nm3e.com>>>

Featuring new and used meters, elements, loads and more by BIRD® and Coaxial Dynamics.

73 Tim Brown NM3E 610-207-4865

CONTESTING — TIPS, TECHNIQUES, RESOURCES

Reprinted with permission from the July 9, 2008 ARRL Contest Update

After being rescued from bankruptcy by a purchaser, [Rohn Tower has re-emerged](http://www.wirelessestimator.com/t_content.cfm?pagename=Vendor%20News) under its own name. That's quite a story and a testimonial to the telecommunications turmoil over the past few years. (Thanks, Mark AA6DX and Ralph N5RZ)

Looking behind our computer and radio desks, what do we see? Wall warts! Sometimes lots of them! Each one powering a small appliance or gadget at 3 or 7.5 or 15 or some other non-12 V voltage. These eat up a lot of watts and are generally a pain in the behind to lug around on for portable operation. A Slashdot story points to one possible solution - the [Universal Power Adapter](http://www.physorg.com/news134661643.html). A kind of intelligent power supply, the UPA or something like it may be showing up in ham shacks before too long.

Here's how to find some of those active in-state stations. Scott W5WZ uses a collection of tools and databases to make a nice map showing active calls in a state. "First, we extract all call signs with Louisiana mailing addresses from the FCC database as a list of LA CALLS. Second, we compare the LA CALLS list with K5ZD's SCP database to get LA CONTESTERS. Third, we geocode LA CONTESTERS using a [tool](http://www.batchgeocode.com/) for batch geocoding. Fourth, we create KML output files as described on Google Earth. When Google Earth is run and the KML file opened, there you have it! 136 Louisiana hams were found in SCP as of 10 May and are now [mapped](http://w5wz.com/main/page_links.html) on Google Earth in the "Contesting Links" section. Zoom in on them, mouse over the place marks to see their calls.

We've all worked the big signal of Chas K3WW, but he was awfully weak in Field Day. Why? He was operating QRP, but still made a big score. Take a look at this pair of Field Day albums from [2007](http://picasaweb.google.com/ChasFulp/K3WWFieldDay2007) and [2008](http://picasaweb.google.com/ChasFulp/K3WWFieldDay2008) to find out how.

Roger K8RI suggests the use of a "snatch block" at the bottom of a tower when hoisting an antenna to the top. A snatch block is a second pulley mounted at the bottom of the tower so that the rope runs along the tower, through the pulley, and then parallel to the ground. "The snatch block allows your helper (who really does the work of lifting the antenna) to walk out away from the tower where it's safer and it eliminates putting a side force on the top mast or gin pole." You can see a photo on [Roger's Web site](http://www.rogerhalstead.com/ham_files/tower.htm) about half-way down that big page. A tram line is even better, since the antenna will not have to be rotated around the guy wires.

Dennis N6KI found this neat [article](http://www.qsl.net/ei7ba/Troubleshooting%20Traps.htm) about how to troubleshoot common problems of antenna traps. Originally written assuming the use of a grid-dip meter, it has been recently updated to apply to the use of antenna analyzers, as well.

Chuck W5USJ reports that [Mouser Electronics](http://www.mouser.com/) sells Fair-Rite beads that make nice baluns at a nice price. "The beads are 1.125 in long, so it doesn't take many. They are available in two sizes that fit RG-8X and RG-213 size cables. The impedance spec for 43 material is 250 Ohms at 100 MHz. For type 61 material the Z is 225 at 100 MHz, 310 at 250 MHz and 275 at 1 GHz.

Type 43 beads

623-2643540002 \$0.77ea RG-8X

623-2643102002 \$1.67ea RG-213

Type 61 beads

623-2661540002 \$1.68ea RG-8X

623-2661102002 \$3.25ea RG-213

A couple of these beads placed right at the feed point or as close as possible do a nice job of minimizing common mode currents."

CONTESTING — TIPS, TECHNIQUES, RESOURCES

Reprinted with permission from the July 9, 2008 ARRL Contest Update

Power line noise can be hard to track down, so a [2006 QST article <http://www.arrl.org/qst/2006/04/hanson.pdf>](http://www.arrl.org/qst/2006/04/hanson.pdf) by W1TRC describes an Ultrasonic Power Line noise detector. It is touted to be able to pinpoint specific insulators on poles. (Thanks, Gene K1NR)

Where *did* that manual go? Cushcraft has made available most of their manuals on their [Web site <http://www.cushcraft.com/amateur/support/instruction-manuals.htm>](http://www.cushcraft.com/amateur/support/instruction-manuals.htm). Just the thing for that used antenna bargain! (Thanks, Sebastian W4AS)

Planning on working at the top of a tubular crankup tower? Here's how Dick WC1M gets up there safely. "Instead of leaning the ladder up against the tower, I extend it to 20 feet and strap it to the tower with heavy duty cargo straps every 4-5 feet. Then I can climb the ladder straight up, just as I would climb a guyed lattice tower (using my safety harness, of course.) When strapping the ladder to the tower, I start with a strap at the bottom, and another as high as I can reach from the ground. I usually add a third strap in between just to make sure the bottom of the ladder is very securely fastened to the bottom tower section before I start climbing. Then I climb the ladder, adding straps as I go up. I prefer this method over leaning the ladder against the tower because when you lean the ladder there's no good way to securely fasten the top to the tower until you get there."

Reprinted with permission from the August 6, 2008 ARRL Contest Update

The ARRL Programs and Services Committee has officially tasked the Contest Advisory Committee with the considering the use of CW Skimmer and similar technologies in ARRL contests. A short-term recommendation for the 2008 Sweepstakes will be made shortly.

CW Skimmer is not the only neat software package that Alex VE3NEA has produced. Take a look at [Faros <http://www.dxatlas.com/Faros/>](http://www.dxatlas.com/Faros/), a program to monitor the network of [NCDXF beacon stations <http://ncdxf.org/>](http://ncdxf.org/) on 20, 17, 15, 12, and 10 meters. A scrolling display shows just where the bands are open and to what stations. To run the software, you'll need a computer with sound card, an omnidirectional antenna, and a computer-controlled CW/SSB transceiver. (Thanks, Rich KL7RA)

We all seem to have the DXCC Entity List memorized...or do we? K0RC relayed news of this interesting new Web [challenge <http://www.oneplusyou.com/bb/view2/countries>](http://www.oneplusyou.com/bb/view2/countries) that exercises your ability to come up with a lot of country names in a hurry! Crack those knuckles and get to it - this would be a great club challenge! It's a lot of fun, says your editor.

The mechanical consequences and effects of guying a tower is discussed in a [presentation <http://www.yccc.org/Articles/KE1IH_Dayton.ppt>](http://www.yccc.org/Articles/KE1IH_Dayton.ppt) posted on the Yankee Clipper Contest Club Web site. It covers elevated guy anchors, star guying, and more. (Thanks, Roger K8RI)

While a chimney seems pretty substantial, several [Towertalk <http://lists.contesting.com/mailman/listinfo/towertalk>](http://lists.contesting.com/mailman/listinfo/towertalk) reflector denizens noted that it's not a good idea to use a brick-and-mortar chimney as a mount for antennas. First, the usually-unreinforced masonry is not strong enough to hold an antenna of any size. Strong winds might not only blow the antenna over, but the chimney, too! And regardless of the mechanical considerations, the combustion products that come out of chimneys cause corrosion - not what we want or need! There are plenty of solutions for mounting a support structure on the roof and the frame of the house.

<http://www.lz1jz.com>





Notes From Your Editor

As we get ready to head into the fall DX and contest season I thought this would be a good time to take a look at solar conditions and the current progress of the sunspot cycle. Perhaps more appropriate phrasing would be the *lack of current progress* of the sunspot cycle. In a word, thus far, this cycle is just plain UGLY!

Figure 1 below shows just how bad things have been recently. The top line (black) of the graph shows that for the past 3 months the Solar Flux Index has averaged not much above 65 and has stayed well below 70. For reference purposes, 64 is the lowest possible Solar Flux Index. An SFI of 64 means a zero sunspot, very quiet sun. As you can see from the red line on the graph, except for a couple of days in July, there have been no sunspots at all since late June.

Earlier this year the propagation community was very excited by the appearance in January of a reverse polarity sunspot. A reverse polarity spot normally heralds the beginning of a new solar cycle. Following propagation and sunspot cycles has been a ham radio sub-hobby of mine for 30 years now. So, on that timeline, I've been following things on a daily basis through Cycle 21, Cycle 22 and Cycle 23 and if the pundits are correct, now possibly into Cycle 24. But, geez! In the 30 years I've been following this stuff we've never had a 3 month period where the SFI averaged 66 for each month!

Figure 2 is a chart where I have overlayed the past 2 sunspot cycles starting with their declared beginnings. Cycle 22 is represented by the dashed black line in the graph and Cycle 23 is represented by the

solid red line in the graph. To the extreme right of the graph you can see the progress of each cycle from its ending low point. I don't know about you but it looks to me like, despite the observance of a reverse polarity sunspot in January, Cycle 23 is still in the process of bottoming out. If that isn't the case and we are actually into Cycle 24, all we can hope is that the debut of Cycle 24 does not portend things to come.

N2 "S"uper "S"uggestions

Here's a tip that has worked just fantastically well for me. I spend a good bit of time sitting in front of my computer. At the ripe old age of 66 my vision leaves a bit to be desired and consequently I wear bifocals to correct for both nearsightedness and to assist with reading. Well, the typical viewing distance to a monitor is too short for optimized nearsightedness correction and too long for optimized farsightedness (reading) correction. Wearing blended bifocals helps in that there is a narrow field of view through the blended portion of the prescription correction that turns out to be ideal for viewing the computer monitor. It gets tiring though to maintain the position of that sweet spot.

The last time I visited my ophthalmologist at Wills Eye, I discussed this with her and she recommended getting "web specs" – a pair of glasses optimized for computer use. She had me take a dozen or so measurements at various times of my pc sessions of the distance from my eyes to the computer monitor. In my case the distances varied from 25 to 30 inches. She then provided me with an eyeglass prescription for lens corrections optimized for that distance. Wow! What an improvement! And, here,'s the added bonus: I also use my 'web specs'

when I'm sitting at the operating position and now those frequency displays and meter readouts and front panel legends are marvelously so much clearer and sharper. BTW, although she wrote out the web specs prescription to include a reading correction as well, she suggested trying without it first as she believed the lesser nearsighted correction would would obviate the need. She was absolutely right. \$79 at Sears Optical – best addition to my shack in years!

OFFICIAL ARRL DXCC STATS

Active Count.....	338
Deleted Count.....	58
Last Addition.....	FJ
Last Deletion.....	STØ



F5OGL says permissions are in hand and military transportation has been confirmed but not the dates yet. For updates: <http://glorieuses2008.free.fr/index-e.htm> and click on Latest News.

XU CAMBODIA

Look for 7K3BKY signing as XU7YYY from Cambodia 3rd to 8th including participation in the All Asian DX SSB Contest. QSL via his home call.

N2 Special Salute

Have you made your contribution yet? Contribute to your Newsletter and get the "S" "S".

©

73, Tony N2SS

You can reach me as follows:
H:856-227-4896 C:609-221-4899
n2ss@n2ss.com

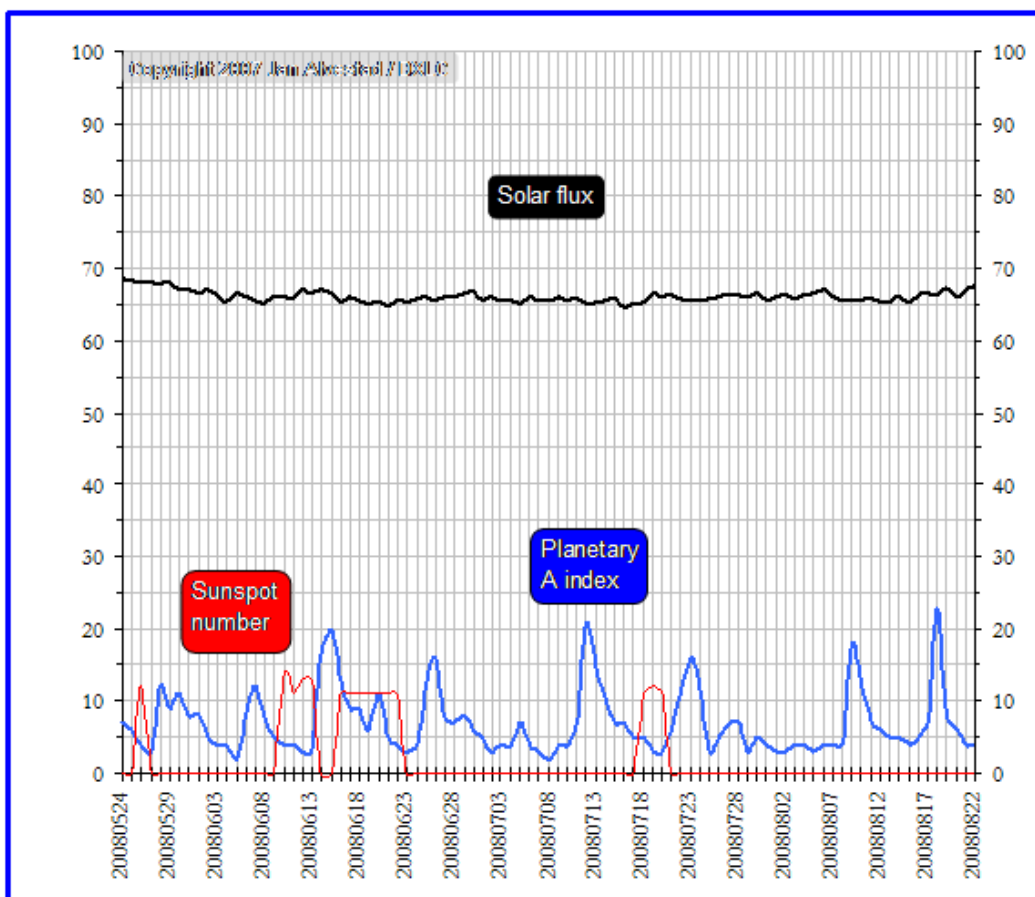


Figure 1 (See text)

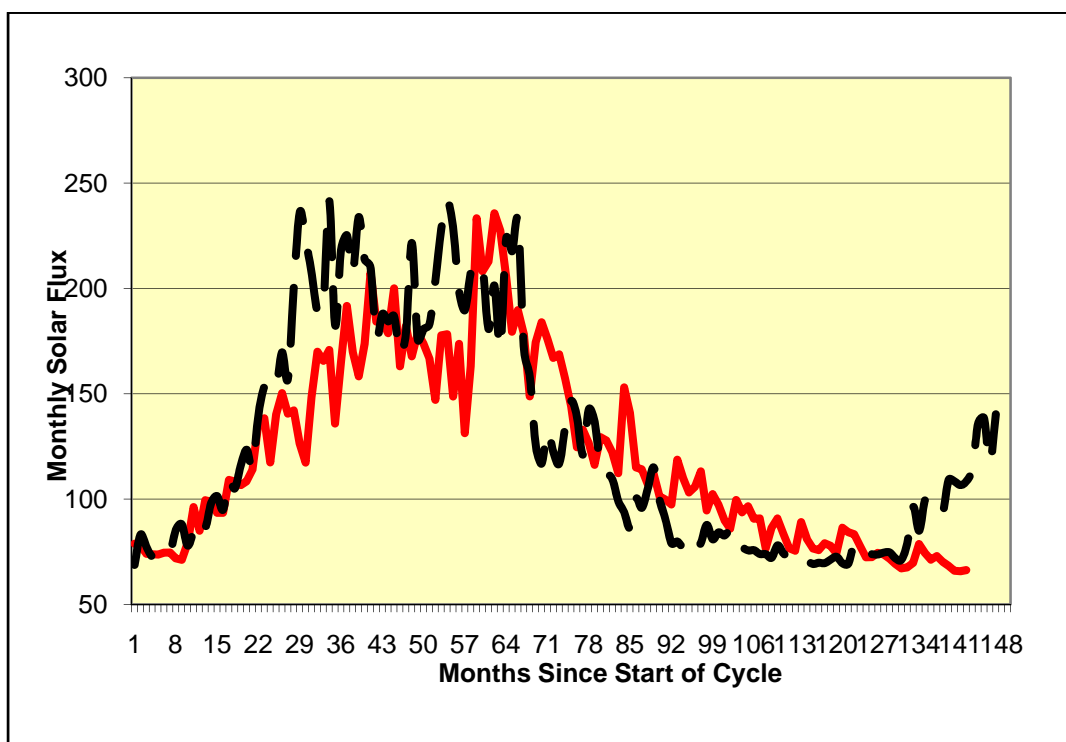
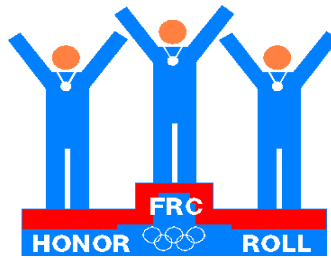


Figure 2 (See text)



SEPTEMBER

conducted by N2SS

2008

WARC BANDS

<u>30 Meters</u>	<u>17 Meters</u>	<u>12 Meters</u>
K2FL .. 337	K2FL...340	N2TK ..331
N2TK335	N2TK 339	K2FL.....327
N2LT326	N2LT 337	N2LT.....323
W3BGN.....324	W3BGN ... 333	W3BGN...317
W2YC.....312	N2SS 325	WØMHK ..310
N2SS297	WØMHK.. 322	N2SS.....303
W8FJ.....298	W2UP..... 321	W2YC.....280
W2UP292	W2YC 316	K2PS.....269
K2PS290	K2PS 311	W2UP267
N3RD.....284	W8FJ 298	W8FJ.....233
WØMHK ..279	W2IRT..... 270	N1RK.....218
W2IRT244	N1RK..... 261	K3II.....203
K3II.....234	K3II 256	W2LE 198
W2LE.....221	W2LE 244	W2YR.....187
N2VW.....165	K2AX 236	W2IRT137
AB2E156	W2YR 203	W2IRT105
N1RK.....134	AB2E..... 127	AB2E92
W2YR.....134	K3ND 127	K2AX86
K3ND.....91	N2VW..... 123	N2VW.....35
K2AX.....81	K3GYS..... 85	K3GYS30
K3GYS17		

K2FL and N2TK still duking it out for that elusive, undisputed **KING OF WARC**



ARRL DXCC Challenge

N2LT 2964	N2SS 1952
N2TK 2925	N1RK 1908
W2YC 2721	W2IRT 1870
WØMHK ... 2628	W2YR 1712
K2PS 2295	K2AX 1631
.....	AB2E..... 1104

Low continues in the lead.

Rules for FRC Honor Roll Listings.

DXCC Challenge is CONFIRMED total ACTIVE (no deleted) per ARRL rules. For all others provide me with your total IOTA's worked, or countries (including deleted) worked for: WARC Bands, 160 Meters, Digital modes, Mobile, 6 Meters or your total for 80,40,20, 15 and 10 for 1.5K Club.

160 Meters

W3BGN304	WØMHK 152
AA1K301	K2FL..... 151
WT3Q.....275	K3ND..... 137
N2LT264	W2IRT 122
N2TK.....258	K2PS 112
NO2R.....243	K2AX..... 106
K3SX241	N2VW 103
W8FJ231	AB2E 100
K3JIG230	W2YR..... 83
W2UP219	N2SS 79
W2YC.....208	K3NL 70
K3II160	W2LE..... 64
N3RS156	N1RK..... 56
.....	K3GYS 12

Another FRC'er Top Bander attains the magical 300 mark. Congratulations Jon. W3BGN, the ultimate 160 Meter DXer however, continues at the **Top of Top Band!**



Digital

W2UP.....342	W2YR..... 132
N2LT339	KQ3F 132
K2PS.....298	N2TK 74
W2YC.....287	N2SS 53
W2IRT.....206	N1RK..... 39
W2LE141	K3GYS 15
.....	W8FJ..... 12



MOBILE DX

AA1K.....277	K3GYS 143
W2YC.....276	W2YR..... 28
N2SS.....234	

Well, he's done it! Jon is now our official **Big Wheel**.



1.5K Club

K2FL..... 1725	N2SS.....1543
W3BGN 1711	K3ND1508
N2TK..... 1703	WØMHK1478
N2LT..... 1703	K3II1449
W2UP 1684	N2VW1315
N3RS..... 1638	N1RK.....1309
W8FJ 1612	W2LE1193
W2YC 1598	AB2E.....1185
N3RD..... 1578	W2IRT.....1163
NO2R..... 1556	W2YR.....1157
K2PS..... 1544	K2AX1101



Islands On The Air

K2FL..... 1021	K2AX298
N2SS 849	N2VW.....275
W2YC 674	W2YR.....248
W8FJ 623	W2IRT.....232
N1RK555	K3GYS232
WØMHK..... 381	AB2E205



6 METER DXCC

N2LT..... 110	N2SS.....55
K2PS 108	WT3Q.....50
WØMHK..... 106	W2YR.....44
AA1K.....99	W2YC.....38
K30090	N2TK.....29
K3SX.....75	K2AX21
N1RK57	K3GYS10

N2LT is right back at the top of 6 Meters!



THE FRANKFORD RADIO CLUB NEWSLETTER

P. O. Box 431 Albury, PA 18011-0431



Affiliated Club

The Frankford Radio Club

Club Officers

President, **W8FJ**, John Schrader610-279-6097
Vice Pres. **K2UT**, Bob Applegate. 609-714-9359
Secretary, **N3ZA**, Moe Mosheim, Jr 215-256-4004
Treasurer, **K2QM**, Bob Shohet.....203-270-8456

Email: w8fj@aol.com
Email: bob@applegate.org
Email: n3za@comcast.net
Email: kq2m@earthlink.net

Committee Chairman

Repeater, **K3NL**, Nick Leipold 610-449-8910
DX Cluster, **N3RD**, Dave Hawes 610-935-2684
Activities, **N3AD**, Alan Donziger610-581-7032
Awards, **K2QM**, Dan Marlow 609-683-5633
Membership

Newsletter & Roster

Editor, **KQ3F**, Joe Stepansky 717-657-9792
Printing, **N3ZA**, Moe Mosheim, Jr.....215-256-4004

Email: kq3f@comcast.net
Email: n3za@comcast.net

Repeater - 2 meters, 147.27/147.87 Input and Output PL tone, 114.8

Home Page - www.gofrc.org

Meetings

Meetings are held on the 2nd Tuesday of each month (Sep through May) at 8 PM at the University of the Sciences, Philadelphia. Summer meetings are held at member homes (one Saturday/ Sunday per month).

Packet Cluster Contest/DX System

144.950 K3ZV
145.050 W3TUA
145.530 AA1K
145.530 K3WW
145.570 WT3Q
145.670 W3PP

Telnet DX Cluster

k2ut.gofrc.org
k3ww.gofrc.org 7300
tuacluster.no-ip.org:23